



# The Essential 2014

## EDITORIAL

### Actor of a world in transition

2014, an unusual year in which we had to reconcile our deep commitments in France and developing countries with not only a terrific upheaval in the development aid world but also an urgent need to rebalance our books after two years in deficit ? The challenge has been met but we must stay ever watchful to retain and develop our capabilities for initiative and innovation.

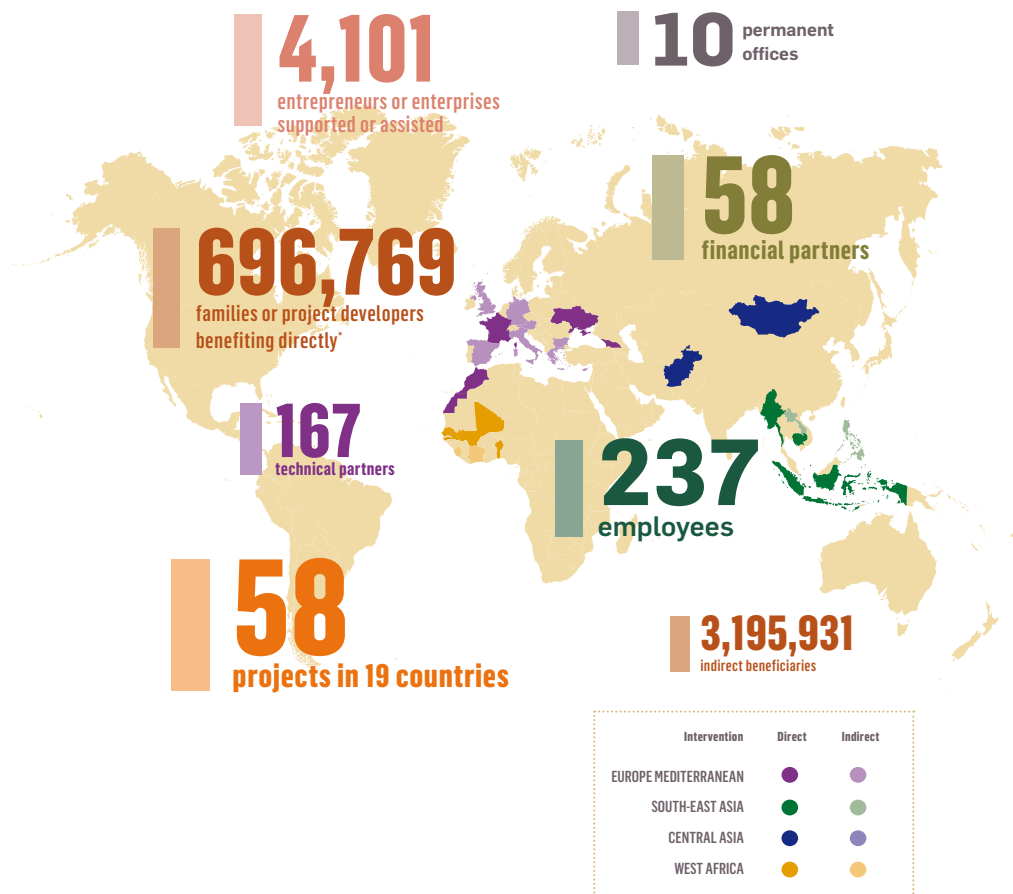
Big business, demanding a leading role in the implementation of aid programmes for countries in the South, has burst onto the development aid scene in France. GERES has a long history of including local enterprises (4101 of which were supported in 2014) in its operational strategies in the countries where we work. The challenges posed by these newcomers are, however, quite different: with our nine partners in the NGO collective, Groupe Initiatives, we have chosen the demanding option of striving for complementarity.

2014 is also the recognition of our quality approach. After 2 years of monitoring, GERES is proud to receive the Label IDEAS, which assure a satisfactory level of 120 indicators evaluated by external experts regarding our governance, financial management and efficiency monitoring. A just reward for your trust which year after year, remains essential. Therefore we keep doing what we do best: working with others to learn, understand and innovate on the long term, transparently, with respect and enthusiasm!

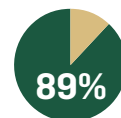
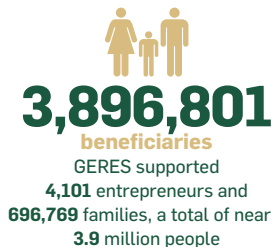
Thierry CABIROL, President  
Alain GUINEBAULT, Executive Director

## Overview

2015 is likely to see considerable changes for GERES with the arrival of the new executive director and the creation of the position of deputy director, it will also be an important year with the climate conference (COP21) taking place in Paris. Significant commitments are expected but, whatever the results, we must keep taking part along with our technical and financial partners in building solutions for a fairer world for the great majority.



## Key figures



resources allocated to our projects, so more than 9.5 million euros

# Highlights in 2014

■ 23 January

## Inauguration of ALTERRE Mali

The ALTERRE Mali team, in the presence of Malian Ministry of Energy representatives, inaugurated two Jatropha oil (farmer biofuels) production units in the municipalities of Yorosso and Koury, South-East Mali.

■ 28 May

## Two projects receive Energy Globe and Ashden Awards

- project to disseminate improved ovens in Morocco
- the Cambodian social enterprise SGFE (Sustainable Green Fuel Enterprise), incubated by GERES.

■ 12 September

## Launch of GERES in Myanmar with the SCALE project

Government, project partners and private sector stakeholders meet to share experience of the fuel-efficient cooking appliance market in Myanmar; the occasion sees the project's official launch.



## ■ Europe Mediterranean

### Facilitating the energy transition

Societal transitions are ongoing in Europe's neighbouring countries, to both South and East, but numerous crises continue to occur.

The very heavy energy dependency of these countries contributes to their vulnerability. During this time, political Europe is still reluctant to commit fully to the energy transition, while local areas look for territorially-based solutions. GERES is therefore fully committed to supporting them, with both their strategic planning and the concrete implementation of field activities, whilst fostering greater co-operation between Europe and its neighbours.

In 2014, GERES continued its work of helping households to manage their consumption better in connection with European projects or local initiatives with local authorities or social landlords. 2014 also saw the passing on of the tools and skills developed in respect of small-scale hydro-electricity to local stakeholders to ensure continuity. In Morocco, the Sustainable Hammam project continued its efforts to establish a genuine professional value chain.

## ■ South-East Asia

### Combating poverty and mitigating climate change through biomass

South-East Asia has 600 million inhabitants, more than half of whom live in rural areas and depend on farming and forestry for their subsistence. Undergoing rapid development and population growth, the region's energy demand has risen significantly with an heavy reliance on traditional biomass used for cooking and industrial purpose. Home to about 15% of the world's tropical forests, Southeast Asia also has seen one of the highest deforestation rates in the tropics with a net annual forest area loss of 1 million hectares in the 2005 to 2010 period, thereby negatively impacting global biodiversity and carbon balance as well as the living conditions of the region's forest-dependent populations.

To help communities sustainably utilize their biomass resources in order that these may contribute to their socio-economic development and resilience against effects of climate change, GERES continued to promote sustainable production and consumption patterns of woodfuels based on its extensive and exclusive knowledge of the topic, including by actively engaging the private sector.

# 58 projects in the field



■ 7 October

### **GERES organizes the Climate Solidarity Festival,**

taking over the Longchamp Park in Marseille to raise local people's awareness of sustainable agriculture and climate change through a variety of festive events and presentations.

■ 15 October

### **Inauguration of the Central Highlands programme**

which aims to promote sustainable economic development in Bamyan province in central Afghanistan.

■ 28 October

### **GERES obtains the IDEAS label**

following support and advice on its governance and financial management and monitoring of its efficiency. This label confirms GERES high level of compliance with the requirements of the IDEAS good practice guide in respect of monitoring the impact of the donations it receives.



## **West Africa**

### **Meeting the challenges of energy access for rural areas**

In West Africa, the challenge of ensuring universal access to energy and modern services is still huge. Apart from its impacts on people's living conditions (time spent gathering wood, exposure to cooking fumes, arduous, time-consuming manual labour, etc.), energy poverty is a notorious constraint on the economic development of rural areas. If people are to make the best use of their local resources, move towards less arduous, higher paying jobs or develop new local services, decentralized solutions need to be found, drawing on the potential of each area. By effectively combining several, especially renewable, energy sources, profitable, accessible services can be provided.

GERES and its partners are therefore designing, testing and implementing solutions to improve access to productive energy in rural areas, the energy efficiency of the technologies used and community resilience in the face of climate change. Private sector involvement is based on the assumption that entrepreneurs are best able to put the solutions into effect, particularly on a large scale.

## **Cross-cutting expertise**

### **Contributing to the territorially- based development of sustainable solutions**

GERES expertise (GEX) comprises of GERES technical advisers who have several years' experience in developing countries and are involved in strengthening and improving different stages of the project cycle depending on their specialisations.

The team's skills cover many energy-related themes, such as rural electrification, cooking energy, energy efficiency in mountainous or continental areas, rural development, territorial approaches



## **Central Asia**

### **Developing bioclimatic solutions for housing and agriculture**

In the mountainous regions and high plateaux of central Asia, climatic conditions are particularly harsh and ecosystems vulnerable. The energy model is biomass-based with high demand for heating in winter. In urban areas of Afghanistan, energy costs account for 25% of the household budget. This energy poverty makes families vulnerable and expose to sicknesses due to cold and toxic smokes.

As regards agriculture, the production season is limited to just four months in Mongolia and heavily dependent on access to natural resources: water, arable land and grazing.

The sparse vegetation is impacted by deforestation. The region does, however, enjoy significant levels of sunshine: up to 300 days per year. GERES is taking advantage of this abundant, free, natural energy source to improve local people's living conditions by developing passive solar houses and passive solar greenhouses for vegetable production.

to climate and development issues, etc. Drawing on GERES long experience in the field, whether in Africa, Asia or Europe, GEX was set up to provide services in line with the needs identified in projects at local levels. Far more than mere consultants, the technical advisers have a detailed, overall view of projects enabling them to come up with realistic context-specific solutions.

# View of accounts in 2014

## Use of funds statement

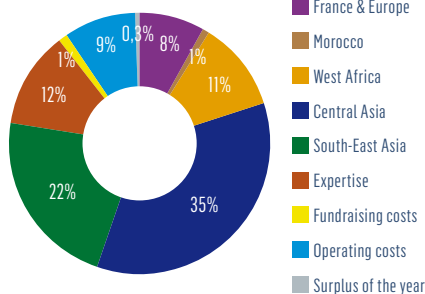
Use of funds	2014		Allocation of funds
Association's purpose	9,580,911	89%	44,222
<i>France and Europe</i>	1,004,942	9%	9,975
<i>Developing countries</i>	7,281,688	68%	34,248
Operating costs	1,009,658	9%	
Fundraising costs	100,674	1%	49,479
Surplus for financial year	28,237	0,3%	
<b>TOTAL USE OF FUNDS IN €</b>	<b>10,719,480</b>	<b>100%</b>	<b>93,701</b>

This statement has been simplified

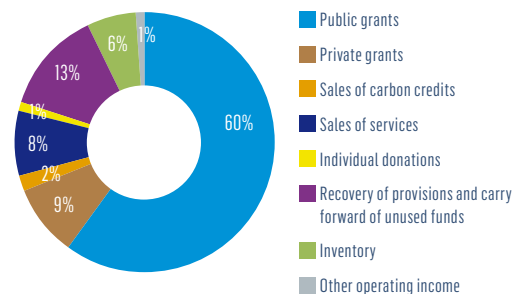
Funds	2014		funds collected
Donations	93,701	1%	93,701
Public grants	6,470,230	60%	
Private grants	1,016,682	9%	
Carbon finance	187,309	2%	
Services	843,372	8%	
Recovery of provisions & variation of stock	849,507	8%	
Various products	128,507	1%	
Recovery of dedicated funds	1,130,171	10%	
<b>TOTAL FUNDS IN €</b>	<b>10,719,480</b>	<b>100%</b>	<b>93,701</b>

DISTRIBUTION OF USES OF FUNDS IN 2014

- ▶ 100% of donations available in 2014 were used.
- ▶ The budget for 2014 is € 10,719,480
- ▶ The social missions (dedicated funds) used 89% of global funds.
- ▶ 10% of our funds were self-financed (service provision and carbon finance), in slight decline due to carbon finance decrease.
- ▶ **GERES is in surplus for its fiscal year 2014, with a positive result of € 28,000**



ORIGIN OF FUNDS IN 2014



## Balance sheet

Assets	2014
<b>NET FIXED ASSETS IN €</b>	<b>39,009</b>
Stock of services	10,674
Stock of goods	1,921,435
Receivables	14,500,155
Accrued income	477,172
Prepaid expenses	42,233
Cash	588
<b>NET CURRENT ASSETS IN €</b>	<b>16,952,257</b>
<b>TOTAL NET ASSETS IN €</b>	<b>16,991,266</b>

Liabilities	2014
Social funds	277,653
Operating result	28,237
<b>ASSOCIATION FUNDS IN €</b>	<b>305,890</b>
Provision for end-of-service allowance	2,133,562
Dedicated funds	509,832
<b>PROVISIONS IN €</b>	<b>2,643,394</b>
Loans and debt from credit institutions	462,806
Due to suppliers	284,022
Tax and social security	438,630
Deferred income	12,856,524
<b>CURRENT LIABILITIES IN €</b>	<b>14,041,982</b>
<b>TOTAL NET LIABILITIES IN €</b>	<b>16,991,266</b>

## Certification and labeling

The financial statements are certified by an independent auditor. Our annual report 2014 (including use of funds statement, detailed accounts, and balance sheet) is available on our website: [www.geres.eu](http://www.geres.eu)

### IDEAS quality label

GERES was awarded the IDEAS quality label to certify its high level of compliance with the requirements of the IDEAS good practices in governance, financial management and monitoring of the effectiveness, particularly in relation to the impact of the donations it receives.



More information (in French): <http://ideas.asso.fr/fr/associations/GERES/>

### DONATE WITH CONFIDENCE

To support us, make a secure online donation on [www.don.geres.eu](http://www.don.geres.eu) and choose between a monthly direct debit or a single donation. You can also donate by check by writing to:

**GERES, 2 cours Foch, 13400 Aubagne**  
**Tel. +33 (0)4 42 18 55 88 – [contact@geres.eu](mailto:contact@geres.eu)**

